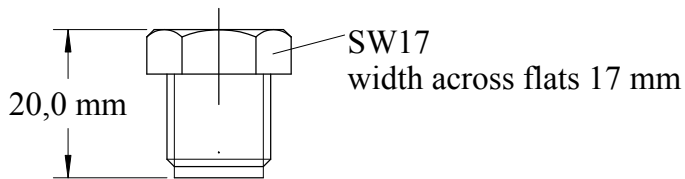
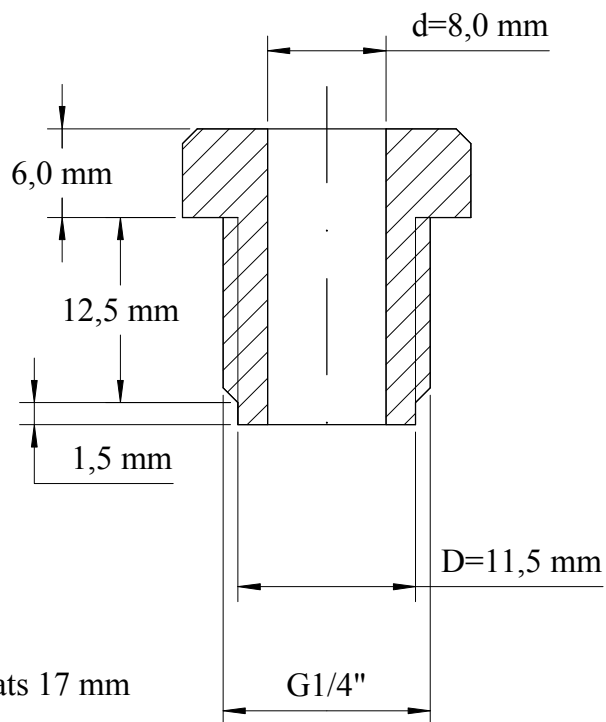


Längsschnitt 2:1  
cross-cut view



Kanten gebrochen  
break sharp edges

				Allgemein- toleranzen gem. ISO 2768		Maßstab ca. 1:1		Gewicht	
						Werkstoff 1.4571			
				Datum	Name	Verschraubung G1/4" m. Bohrung external thread G1/4" with through hole part no. 40021			
				Bearb. 05.04.2016	S. Carstens				
				Gepr.					
				Norm					
				TurboCAD16.1					
				<b>EngineSens Motorsensor GmbH</b> D-68519 Viernheim Tel. 0049-6204-986 08 23 Fax 0049-6204-986 08 25					
Index	Änderung	Datum	Name			Blatt 1/1			